

2024 BX CRAFTSMANSHIP AWARD RECIPIENTS



THE CRAFTSMAN: Matt Jones, Nick Keller, Josh McDowell, Ryan Rainey and Kevin Sturgeon of Speer Mechanical

THE WINNING WORK: Installation of the chiller system at Capitol Square

The crew from Speer Mechanical is responsible for the planning, fabrication, layout and installation of the chiller system at Capitol Square.

With careful planning and coordination, the team disassembled and removed three chillers to prepare for the new equipment. Field measurement and specialty drawings were created to ensure the fabricated pieces would fit onto the service elevator. With the aid of a street crew and a 950-ton crane, the equipment was brought to the roof of the 27th floor. Multiple permits were necessary, and several blocks between Broad and State streets had to be shut down for the load. Tie-off points and additional structural steel were installed to accommodate the weight of the new materials. Three separate gantries were used to transport the chillers over the half wall of the building. The crew also performed a complete retrofit to the existing system, including new piping, valves and controls. A total of six system shutdowns were completed to accomplish all the valve tie-ins.

All five crew members belong to Plumbers & Pipefitters Local 189. This is the third crew award for Speer Mechanical.



THE CRAFTSMAN: JR Evans and Chris Nesbit of Shaffer Construction

THE WINNING WORK: Carpentry, drywall and framing installation at Hank's Low Country Seafood & Raw Bar

The impressive interior framing work completed by the crew from Shaffer Construction is on display at Hank's Low Country Seafood & Raw Bar in downtown Columbus.

With a tight six-month schedule, the crew completed their work using two sets of massive drawings. Attention to detail was imperative, and precise coordination around equipment located above and below their work was essential to the overall success of the project. A unique raised floor system was built on the building's expansion joint located in the restaurant and kitchen area. The moving installations are attached to one side and positioned above and below pretensioned slabs to work seamlessly with the building expansion zones. The final drywall surfaces required zero margin for error regarding squareness and plumbness - as well as finish - to accept the intended light fixture, artwork and millwork installations. All the work was fabricated and completed on site.

Both Evans and Nesbit are members of Carpenters Local Union 200. This is the first crew award for Shaffer Construction.



THE CRAFTSMAN: Dave Caulkins, Jeremie Higgins, Shane Jones, Shawn McCarty and Josh Poston of Settle-Muter Electric, Ltd.

THE WINNING WORK: Installation of electrical and fire alarm systems at OhioHealth Pickerington Methodist Hospital

Careful planning and meticulous attention to detail were key components for the crew from Settle-Muter Electric, Ltd. on the work done at OhioHealth Pickerington Methodist Hospital.

The crew was responsible for the complex task of seamlessly integrating the new 220,000-square-foot expansion hospital into the infrastructure of an existing medical campus. Work began by excavating the electrical room to a depth of 10 feet, creating the groundwork for the intricate system. The 90-degree stub-ups were assembled off-site, then precisely matched with specific sections of equipment with the use of BIM. In total, more than 300 stub-ups required connection to the correct underground conduits. The team managed to skillfully execute this undertaking with the highest level of accuracy and zero errors. Installation included 3,000-amp service, 5,000-amp paralleling switchgear, two 1,500-KW generators, 20 distribution panelboards and over 80 branch panelboards. The crew also laid out more than 325 miles of wire and installed thousands of light fixtures and devices.

This is the fifth crew award for Settle-Muter Electric, Ltd.



THE CRAFTSMAN: Charlie Davis, Paul DiCesare, Ty Garber, Ethan Niedzielski and Jeff Richard of Setterlin Building Company

THE WINNING WORK: Finish carpentry work at Blacklick Woods Metro Park

The detailed carpentry work of the crew from Setterlin Building Company is on display at Blacklick Woods Metro Park.

Components of the canopy walk include the boardwalk and handrail framing, the X-bracing, a swinging plank bridge and swinging rope bridge. One of the biggest challenges was the site logistics. The area required that the work take place 40-to 60-feet in the air using boom and scissor lifts. To preserve the surrounding forest and trees, the crew created paths to access the space. The work was divided into bays and completed and verified one section at a time, since it was challenging and time consuming to move lifts into position on the forest floor. In order to stay on schedule and meet rigorous quality standards a total of eight boom lifts, three 40-foot scissor lifts, one 10,000-pound lull, a tracked skid steer and 22 carpenters were utilized throughout the project. Due to the complexity of the work and tight tolerance of poles from the manufacturer, everything was fabricated on site and custom built in place.

This is the third crew award for Setterlin Building Company.



THE CRAFTSMAN: Jim Allen, Alex Edmiston, Alan Gerhard, Cory Karpakis and Bob Muncy of Mill Tech, LLC

THE WINNING WORK: Custom millwork at The Joseph Group

The customized millwork on display at The Joseph Group is the work of the crew from Mill Tech, LLC.

The craftsmen completed fabrication for 11 rooms in the office space and used a variety of materials and methods to ensure a quality, high-end finish to the customers' satisfaction. Finished products including cabinets, custom desks, countertops, restroom sink frames, chair rail, rolling ladder, solid surface tops and bench seating were part of the design. Multiple style themes can be seen throughout the project, which incorporates various wood species as well as quartz, laminate, metal and fabric. A CNC router was fine-tuned to cut the custom-designed cloud. The crew used its finest methods and hardware to guarantee the piece would be structurally supported by the ceiling. Installation took place over several days, and adjustments and touchups were performed onsite as necessary. With the exception of several trim pieces, all fabrication was completed in the shop and re-assembled on site.

This is the second crew award for Mill Tech, LLC.



THE CRAFTSMAN: Rick Collins, Heath Hooper, Hunter Hooper, Cole Kirby and Cody Parsell of Midstate Contractors, Inc.

THE WINNING WORK: Seam roof renovation at The Barn at Stratford

The combined experience of the crew from Midstate Contractors, Inc. is evident in the structural roof repair of The Barn at Stratford in Delaware.

The crew was given the challenge of repairing the 1840s structure, which had suffered extensive wear and deterioration. Over time, the failing bents caused the roof and ridge members to sag and pushed the exterior walls out at the eaves. One of the projects' challenges was to keep the building open and operational for events throughout renovation. The crew installed a temporary watertight floor just below the bent girt and began the removal of the existing roof and framing. Each section was safely removed one at a time, then repaired with a timber framing system using post and beam construction. The framing, rafters, purlins and sheathing were built using rough-sawn poplar. All the standing seam panels were fabricated in-house. A double lock system and 10-foot panels were used to maintain the roof's historic appearance. In addition to the roof renovation, repairs were made to the original masonry on the south wall.

This is the first crew award for Midstate Contractors, Inc.



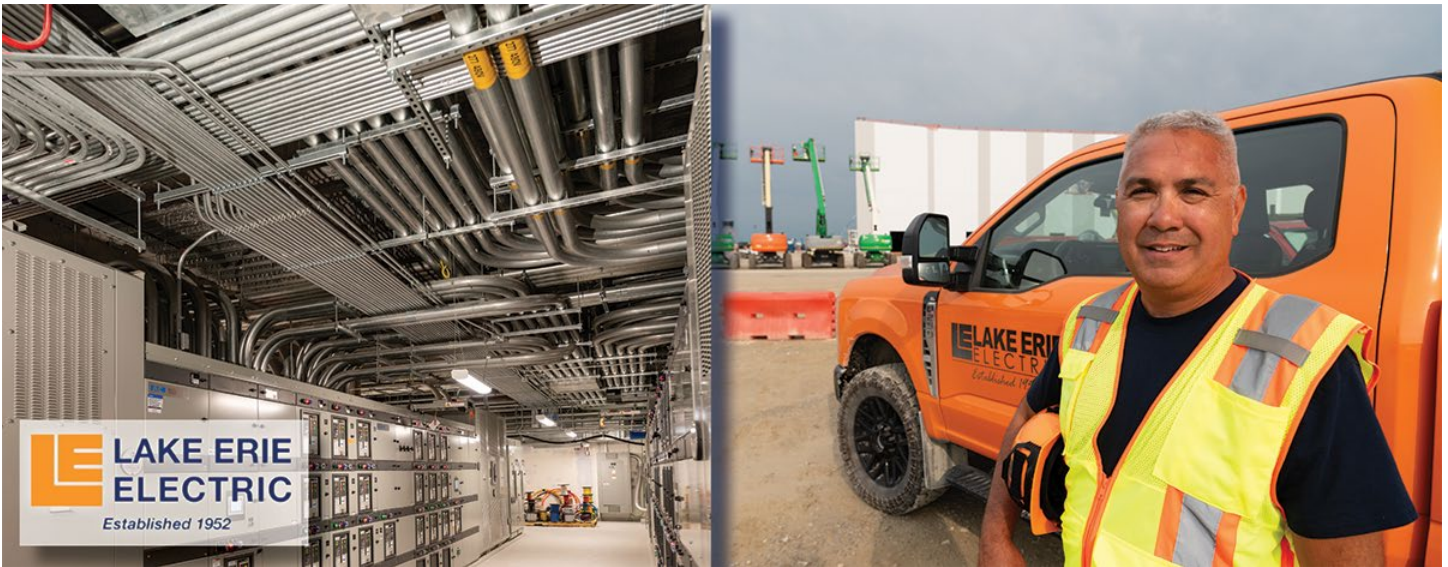
THE CRAFTSMAN: Abdon Galarza, Miguel Juarez, Victor Juarez, Benito Retana and Jake Nichols of Lang Masonry & Restoration Contractors

THE WINNING WORK: Installation of brick and limestone at The Ohio State University Interdisciplinary Health Sciences Center

Careful planning and attention to detail were key factors in the work on display at the newly renovated Interdisciplinary Health Sciences Center at The Ohio State University.

The project took three years to complete and was performed in three separate phases. Most of the work involved the addition of new masonry and limestone, which was incorporated to blend with the 100-year-old building. Earlier phases of construction completed in the forum posed a unique set of challenges in the workspace. To gain access to the penthouse, the crew engineered a plan to set hydro-mobile scaffolding around other trades, while allowing entry through two skylights in the roof. Meticulous planning and ingenuity went into the massive arch that leads into the forum. Nearly one million tons of limestone and precast stone were prefabricated offsite. Four brick patterns consisting of running bond, vertical running bond, common bond and English bond can be seen throughout the project.

This is the third crew award for Lang Masonry & Restoration Contractors.



THE CRAFTSMAN: Kenny Green of Lake Erie Electric

THE WINNING WORK: Installation of electrical systems and unit substations at
The Ohio State University Wexner Medical Center

Electrician Kenny Green is responsible for the planning, management and installation execution of the electrical rooms at The Ohio State University Wexner Medical Center.

As part of an 18-mth joint venture between Lake Erie Electric and Vader National Electric, Kenny and his team traveled daily from Dayton for the project. Work was concentrated to three main electrical rooms which will help feed power throughout the 1.9 million square foot hospital. Responsibilities included bending and stick building nearly 48,000 feet of conduit ranging in size from $\frac{3}{4}$ -inch to six inches. Due to the complexity of the rooms, prefabrication was not a viable option, and all conduits were measured and hand bent on site. More than 140 pieces of equipment ranging from substations, transformers, panels, automatic transfer switches, variable frequency drives and control panels were set in place. These conduits fed through the mechanical floor and then throughout the hospital. Kenny's dedication and overall success led to a request for his assistance in other areas of the project.

Kenny is a member of IBEW Local 82, this is his first BX Craftsmanship Award.



THE CRAFTSMEN: Jose Calderon, Jair Gonzalez, Jonathan Gonzalez, Juan Gonzalez and Jose Lazo of The Keller Group Limited

THE WINNING WORK: Installation of hardscape and landscape at Deer Creek State Park Lodge

The detailed design elements seen at Deer Creek State Park Lodge in Mt. Sterling is the work of the crew from The Keller Group Limited.

The nearly two-year project includes installation of a self-supplied creek, an intricate paver walkway, fire pit and trellis. Prior to their installation, the crew assisted other trades to help prepare the work area. Imperfections in the paver material resulted in a change to the original design pattern. With modifications from the architect, a five-color herringbone pattern was used to create a path leading from the front entrance to a circular patio area. The crew also installed a serene water feature which includes an upper and lower pond, boulder waterfalls and specially designed air pumps to provide enhanced features that accompany the deer sculptures. The trellis was fabricated offsite and installed in the field. Despite construction site constraints, the crew was able to maintain a tight timeline and create a finished product for individuals to enjoy for many years to come.

This is the second crew award for The Keller Group Limited.



THE CRAFTSMEN: Daniel DeMatias (*not pictured*), Zeferino Ibanez, Demetri Johnson, Danny King and Seth Weikert of Lang Masonry & Restoration Contractors

THE WINNING WORK: Sandstone veneer and limestone trim installation at Kenyon College

The customized masonry work on the new residence hall at Kenyon College is the work of the crew from Lang Masonry & Restoration Contractors.

The newly constructed 21,000-square foot dormitory is made up of sandstone veneer with limestone trim around the windows and doors. Discovery of a coursing miscalculation early in the process helped save the project and crew valuable time and materials. Locally sourced, custom cut stone was produced in five different shades and includes 129 unique sandstone shapes. One requirement of the team was to ensure each stone was strategically placed according to the drawings to achieve a consistent appearance. Other unique features and attention to detail can also be seen in the recessed gutters and downspouts. Several of the limestone trim pieces weighed more than 400-pounds and required a crane to set in place. The entire building includes 50 specialty anchor types, totaling over 25,000 added stone anchors, some of which were fabricated on site.

This is the second crew award for Lang Masonry & Restoration Contractors.



THE CRAFTSMEN: Patrick Baker (*not pictured*), Nick Bourekas, Jordan Hinkle, Eddie Pacheco and Owen Rieger (*not pictured*) of Jones-Schlater Flooring, LLC

THE WINNING WORK: Installation of ceramic wall panels at Saint Mary School

The crew from Jones-Schlater Flooring, LLC is responsible for the exceptional installation of ceramic wall panels seen throughout the first floor of Saint Mary School in German Village.

Work took place in Heritage Hall and the vestibule of the newly built spaces at the school. Due to the schedule and project complexity, installation was completed at night to allow space for other trades and to maintain temporary classrooms during the day. The limited specialty product was precisely cut, then set in place around multiple openings and windows using a combination of platform lifts and suction cups applied by hand. Most of the material was 24 by 48-inch ribbed tile with 1 by 3-meter gauged porcelain. A 1/16-inch grout joint was a requirement for all the large format tiles. Inconsistencies in wall flatness, installation near stained-glass windows and difficult cuts around exposed steel beams were a few of the challenges met by the crew. The team has combined work experience of nearly 30 years.

This is the first crew award for Jones-Schlater Flooring, LLC.



THE CRAFTSMEN: Blake Kessler, Oscar Magan, Ivan Martinez, Enrique Martinez Morales and Bernardo Pablo of Environmental Management, Inc.

THE WINNING WORK: Hardscape and landscape installation at Preston Centre Sunken Garden

A high level of planning and expertise by the crew from Environmental Management, Inc. was necessary for the work completed at the urban garden park at Preston Centre.

Located in the former basement of the PNC Bank Building in downtown Columbus, the 6,000 square foot greenspace is a first of its kind for the area. A seamless integration of hardscape elements can be seen throughout the existing buildings' features. Installation of porcelain pavers on the stairs help create a seamless transition from street level to the garden. The crew developed a tray system to stabilize the pavers and provide material longevity. More than 1,100 linear feet of granite was installed for the planter and street curb, and more than 300 square feet of Bluestone paving was used in the garden. All materials were custom cut on site. To navigate around the narrow stairway, the crew used cranes for the larger trees and other materials. Design adjustments, drainage control, introduction of rare plant species and varying microclimates were a few of the challenges encountered by the team.

Kessler and Pablo are members of Laborers Local 423. This is the second crew award for Environmental Management, Inc.



THE CRAFTSMEN: Colin Baker, Zack Benton, Brad Marcus, Mitch Mitchell (*not pictured*) and Darel Toman of Converse Electric

THE WINNING WORK: Installation of electrical components at Saint Mary School

The crew from Converse Electric is responsible for the impressive electrical installation work throughout Saint Mary School in German Village.

The project was comprised of a renovation to existing buildings and addition of new buildings on campus. This work included the power infrastructure, site utilities, lighting, fire alarm and control systems. In collaboration with the general contractor, the team devised innovative solutions for various elements throughout the installation. The crew worked closely with other trades to coordinate and adjust to various workspace changes. Converse also worked with AEP to install a second service, while maintaining the existing service. Careful planning and execution were essential to coincide with ongoing school and church activities. Temporary classrooms were assembled and made functional in the gymnasium while work took place in other areas. Nearly 1,000 prefabricated items were crafted offsite, saving the crew valuable time during installation.

This is the first crew award for Converse Electric.



THE CRAFTSMEN: Travis Collins, Jerry Hoover and Adam Puckett of Construction Systems, Inc.

THE WINNING WORK: Custom millwork at North Bank Condominiums

The skill and artistry of the crew from Construction Systems, Inc. can be seen throughout the newly renovated lobby of the North Bank Condominiums.

Attention to detail was necessary for installation of the millwork panels, column wrap, concierge desk, cabinets and slat wood wall and ceiling. The space remained operational during construction, and the crew worked closely with building management to ensure there was minimum disruption to its residents. A temporary desk was built until the new concierge desk could be assembled. Coordination between the crew and other trades was a crucial element in the installation of the nearly 77 wall and ceiling panels.

The project also included 2,500 square feet of walnut veneer panels and 500 square feet of solid walnut panels, all cut and field modified for final installation. Over 900 linear feet of aluminum reveals had to be field cut, mitered and installed with the millwork panels.

This is the first crew award for Construction Systems, Inc.



THE CRAFTSMEN: Matt Anelick, Matt Jarvis, Jeremy Langley and John Smoke of CK Construction Group

THE WINNING WORK: Repair and restoration of the timber truss system at St. Thomas Aquinas Church

Meticulous planning and coordination were key factors for the crew from CK Construction Group throughout the structural renovation work at St. Thomas Aquinas Church.

The early 1820's church was closed in 2020 due to structural concerns, and repairs to shore up the existing truss system began shortly thereafter. The crew was tasked with supplementing the wood trusses with steel angles and channels without compromising the ceilings' historic and sentimental value. Working within a tight work environment, a plan was developed for easy access to the space and materials. Temporary wood platforms were constructed on multiple levels, with stairs and ladders at various locations, to provide access to the lower levels and truss bearing walls. Crew members designed a trolley system to transfer the steel pieces, some of which were upwards of 330 pounds and up to 15 feet long. Each steel piece was crane lifted into a custom-built dormer opening and platform in the existing roof. Considerations were made for each piece of the design, fabrication and installation as no two dimensions were the same.

This is the fifth crew award for CK Construction Group.



THE CRAFTSMEN: Tim Dipietro, Dan Hamilton, Guy Johnson, Mike Pepper and Chez Sanchez of Anderson Aluminum Corp.

THE WINNING WORK: Glazed window wall units and aluminum composite panels at Astor Park Offices

The installation of the distinctive façade at the Astor Park Office is the work of the crew from Anderson Aluminum Corp.

Inspired by the ripples of the Olentangy River, the building's unique glass exterior is the highlight of the 140,000 square foot mixed-use complex.

The crew led the design assist, engineering, fabrication and installation of 737 glazed window wall units, 1,737 aluminum composite panels, doors and balcony railings. Quality control checks were used to verify the correct angle dimensions of each window wall unit. A high degree of accuracy was key to ensuring tight tolerances of 3/16 of an inch or less were met for the final install. A quarter of the units required saw cut angular horizontal mullions and precut vertical mullions to achieve the ripple design, seen throughout the corners and balconies. Crew members combined innovative solutions to streamline and aid in the building process. This included the use of laser technology, a SmartLift suction cup robot, and crane and boom lifts.

This is the third crew award for Anderson Aluminum Corp.